

Sea Operations for Ocean Observatories

**Installation and Maintenance of Shallow Water
Cable Observatories: Who needs an ROV!**

—

Adrian Round Director of Observatory Operations

A UNIVERSITY OF VICTORIA INITIATIVE

Presentation Overview

ONC has a number of observatories/sites that are not maintainable using our standard ship/ROV approach. Currently ONC operates eight Community Observatories on the British Columbia coast and in the Arctic. These remote observatories are designed to be serviced without the need for ROVs or specialized support vessels

Points for discussion:

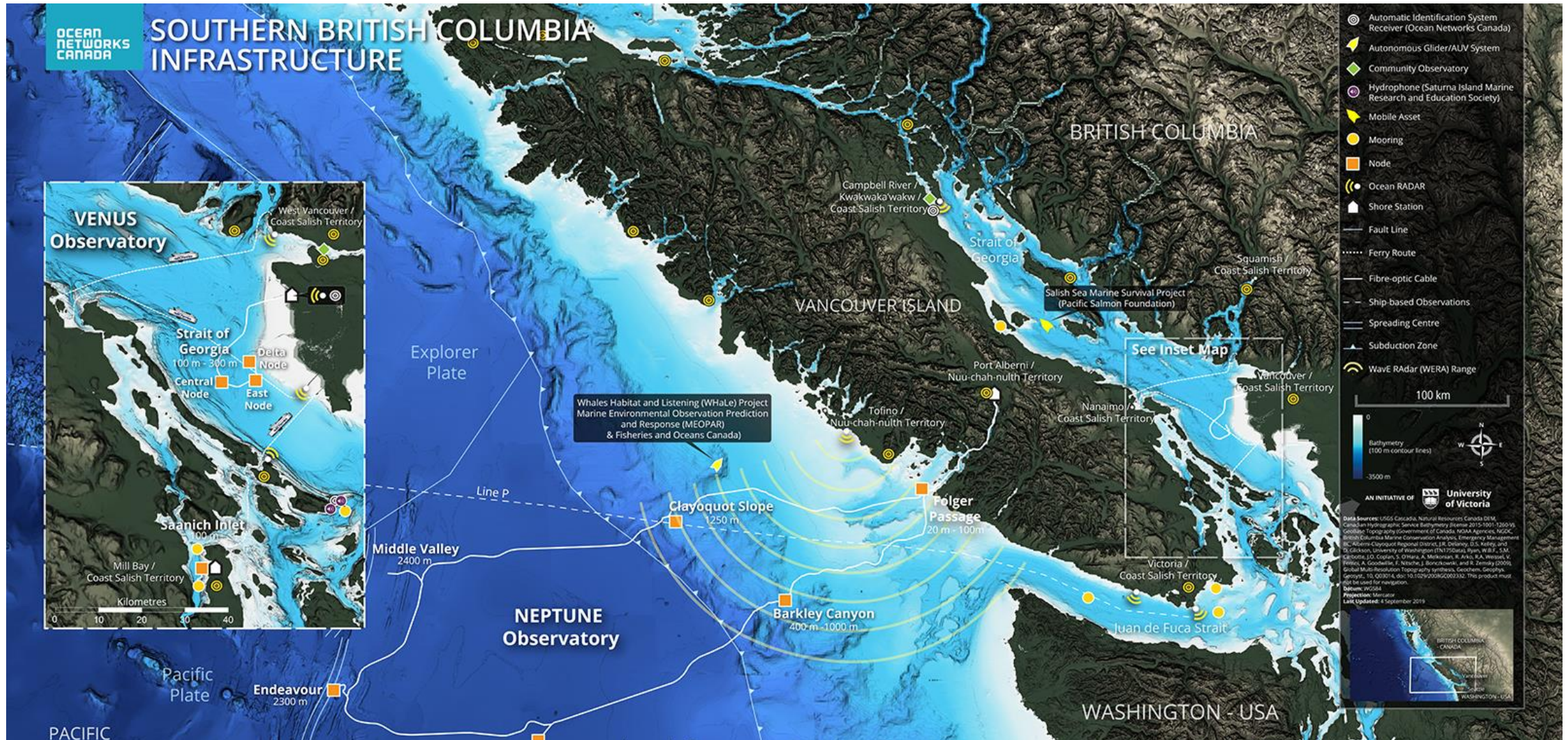
- Diver maintenance
- Arctic
- Community Observatories
- Questions

A large school of fish, likely salmon, swimming in deep blue water. The fish are densely packed and moving in various directions, creating a dynamic and textured scene. The lighting is somewhat dim, highlighting the silvery scales of the fish against the dark background.

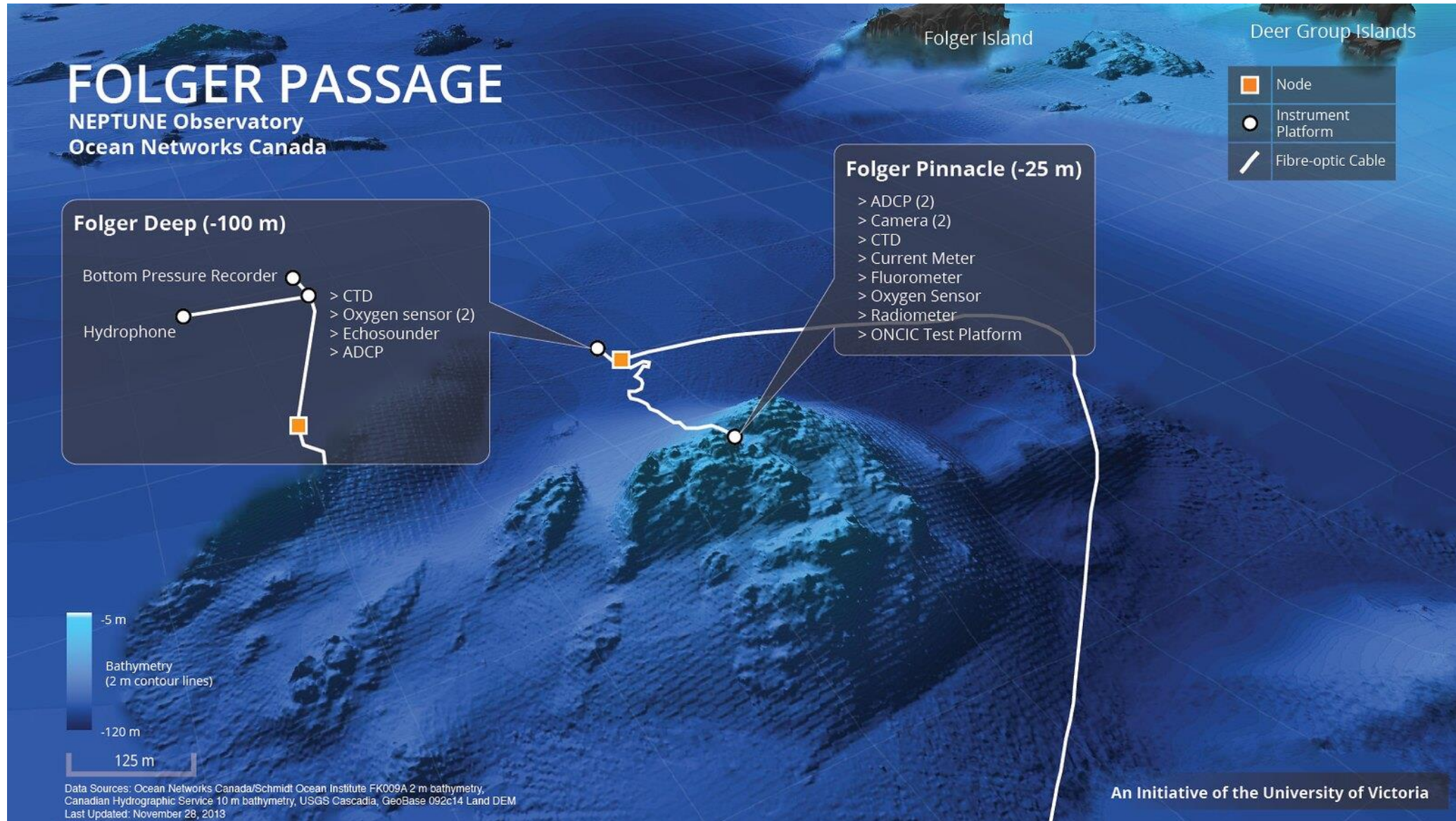
**OCEAN
NETWORKS
CANADA**

Diver Maintenance

Diver maintenance



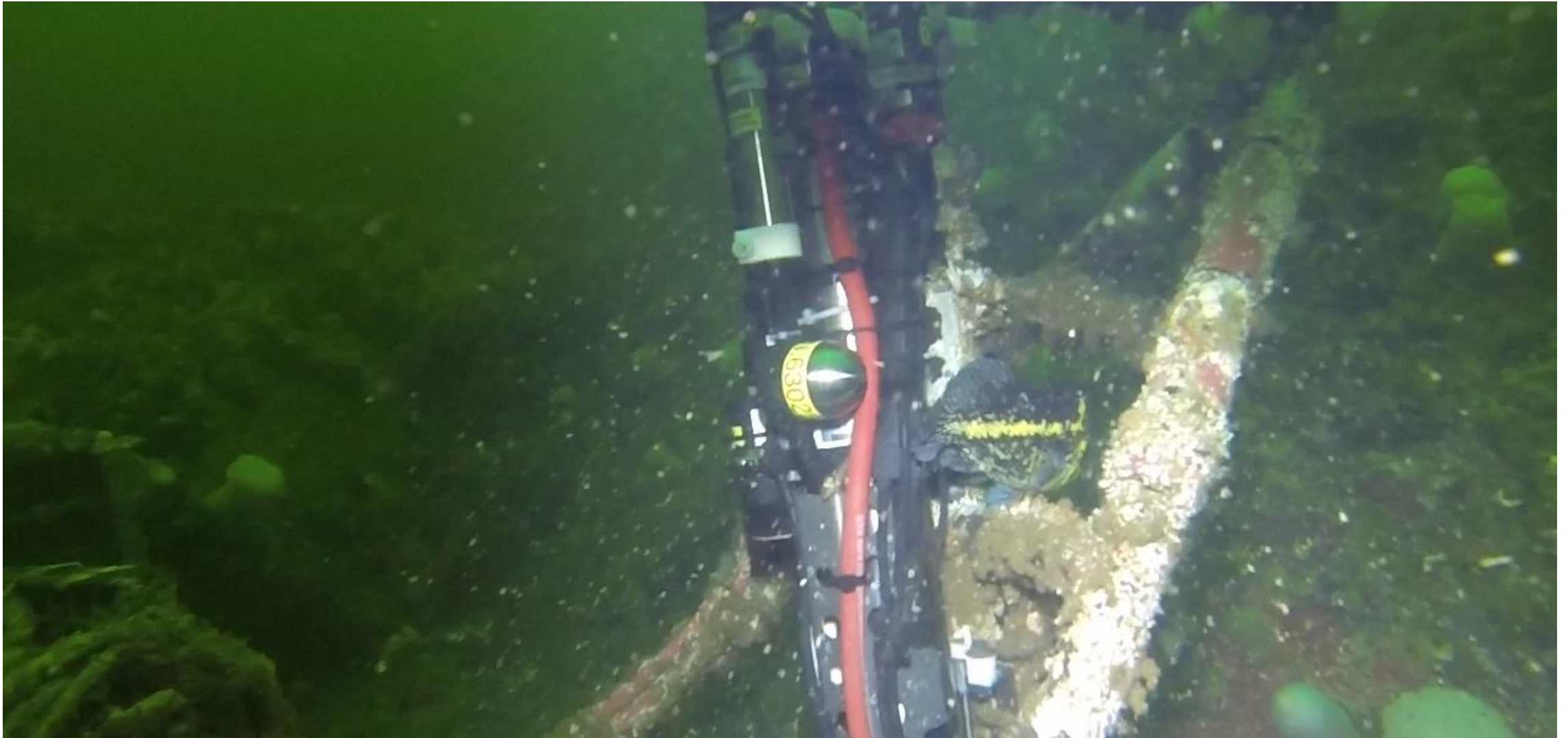
Diver maintenance



Diver maintenance



Diver maintenance



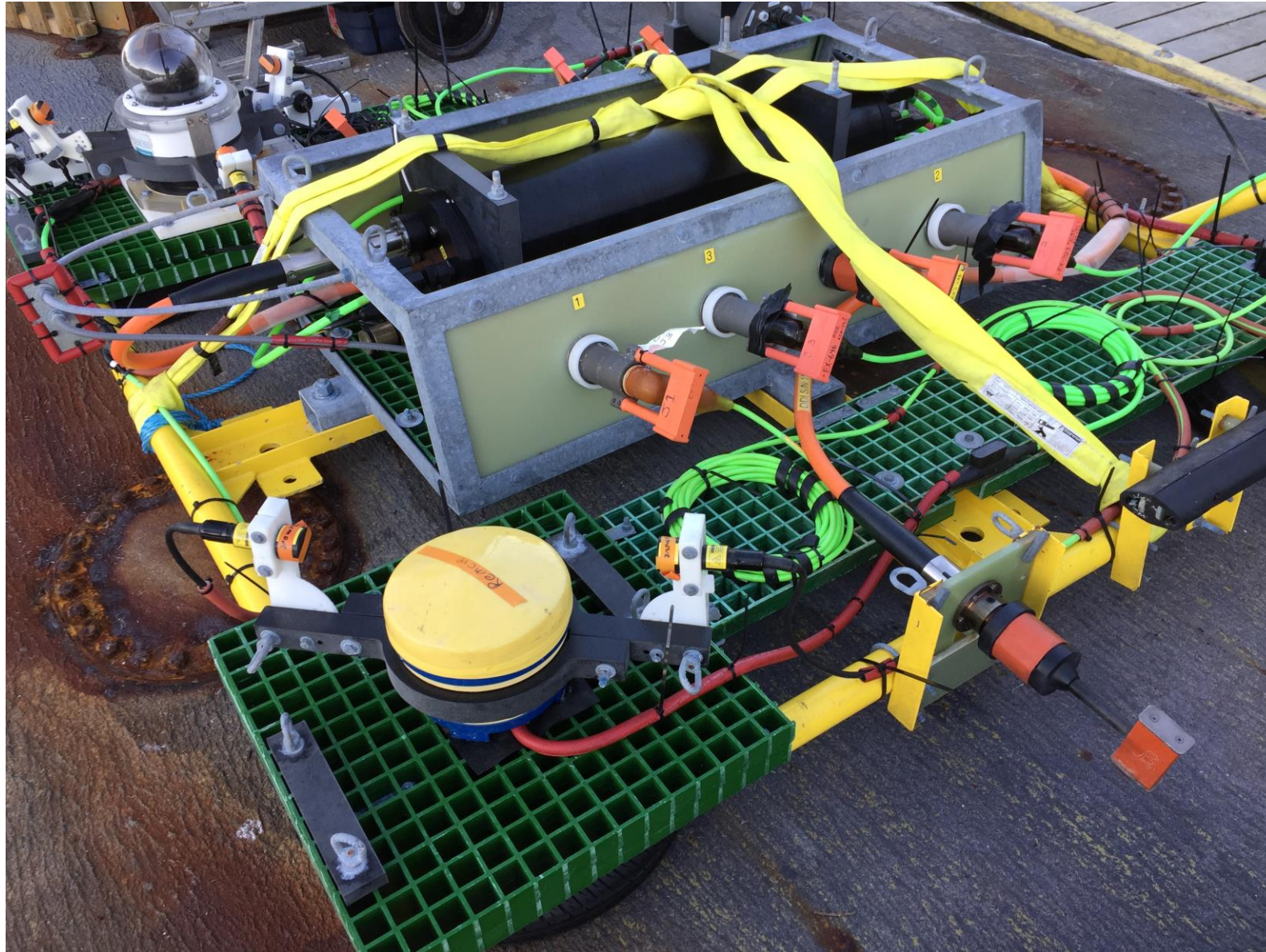
Diver maintenance



Diver maintenance



Diver maintenance



A large school of fish, likely salmon, swimming in deep blue water. The fish are densely packed and moving in various directions, creating a dynamic and textured scene. The lighting is soft, highlighting the silvery scales of the fish against the dark background.

**OCEAN
NETWORKS
CANADA**

Arctic

Cambridge Bay



Cambridge Bay



Cambridge Bay



Cambridge Bay



Cambridge Bay



Gascoyne Inlet



Gascoyne Inlet



Gascoyne Inlet



Gascoyne Inlet



Gascoyne Inlet



A large school of fish, likely salmon, swimming in deep blue water. The fish are densely packed and moving in various directions, creating a dynamic and textured scene. The lighting is somewhat dim, highlighting the silvery scales of the fish against the dark background.

**OCEAN
NETWORKS
CANADA**

Community Observatories

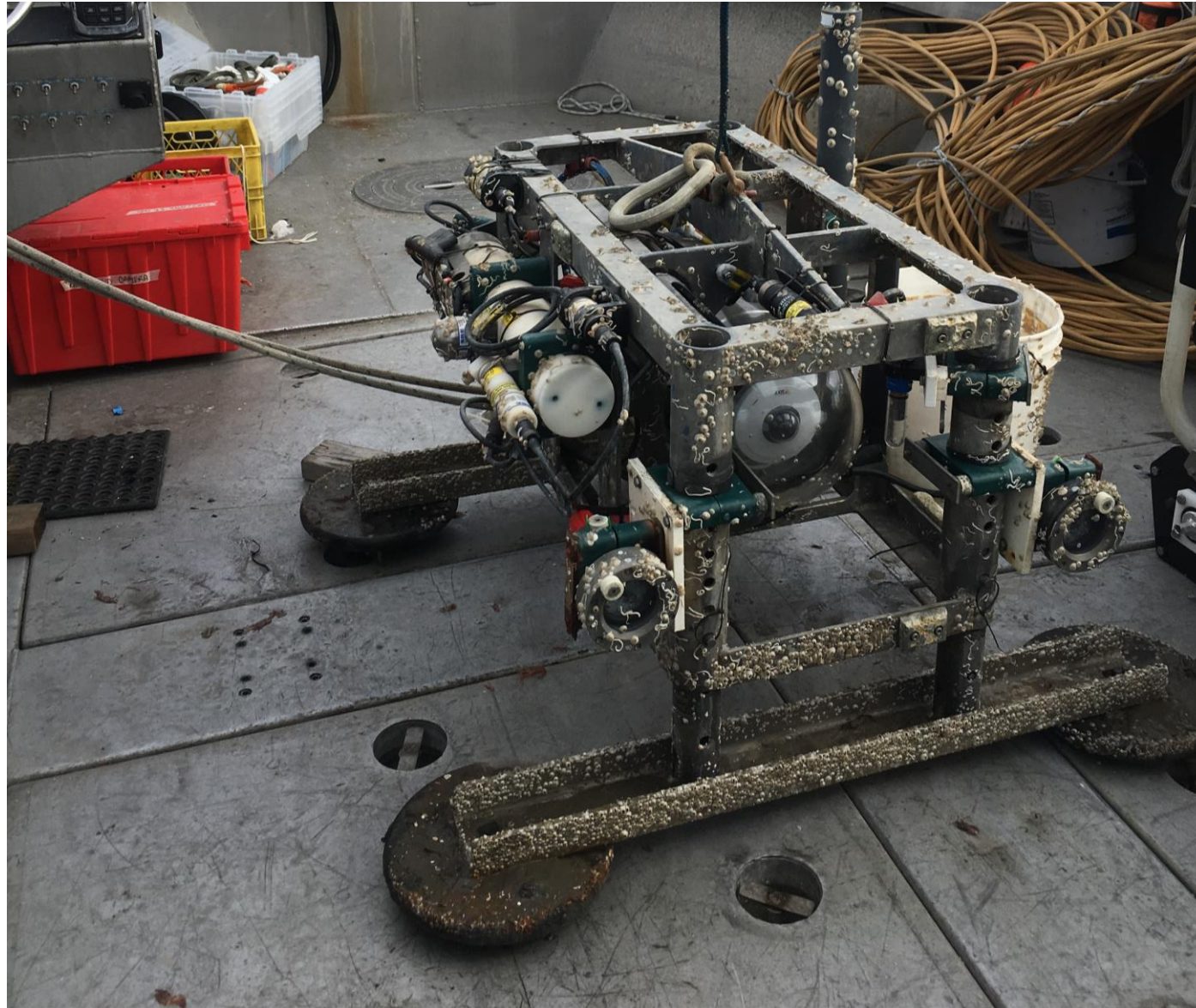
Community Observatories



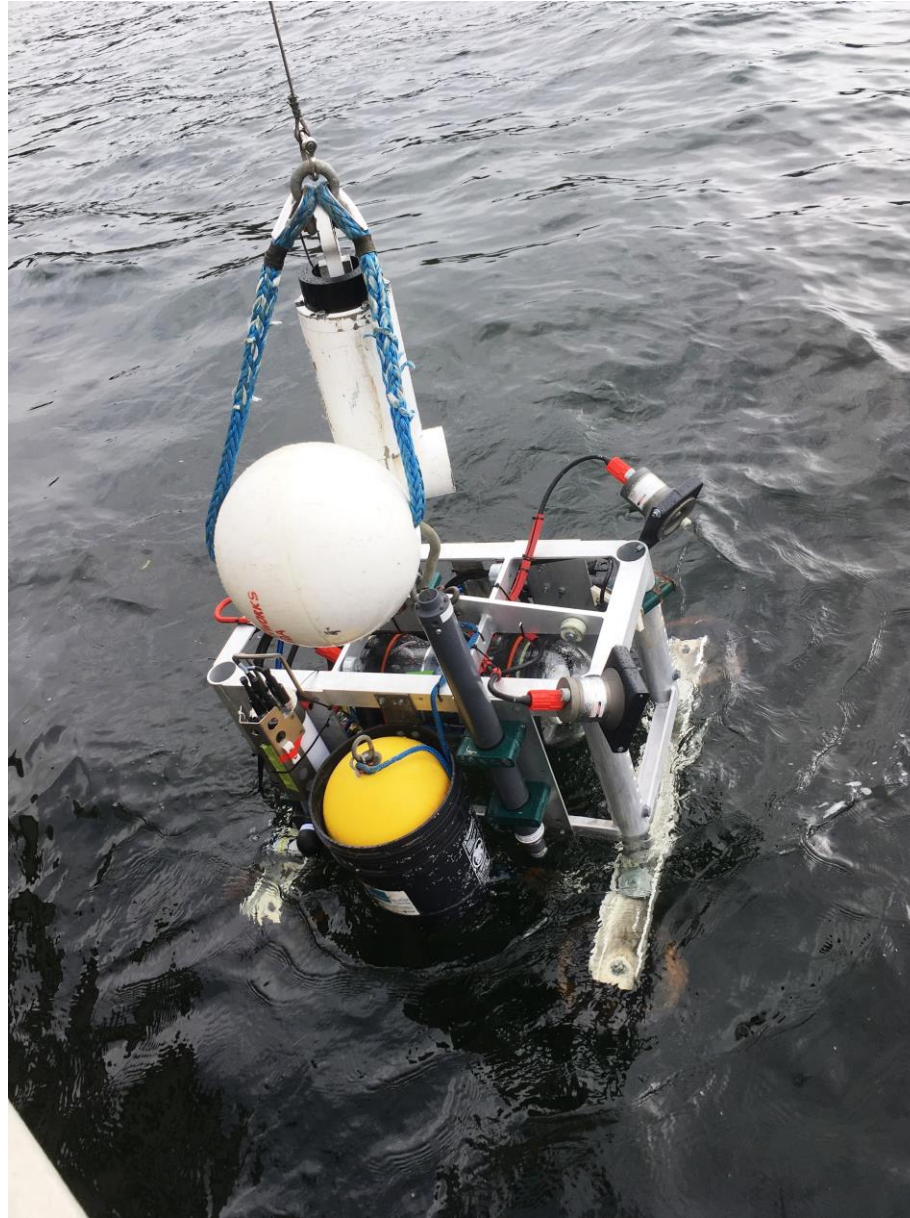
Community Observatories



Community Observatories



Community Observatories



Community Observatories



A large school of fish, likely salmon, swimming in deep blue water. The fish are densely packed and moving in various directions, creating a dynamic and textured scene. The lighting is soft, highlighting the silvery scales of the fish against the dark background.

**OCEAN
NETWORKS
CANADA**

Questions